

Culinary Delights

BY DEBORAH BURST



TAKE A TASTY TRIP ACROSS LOUISIANA TO WORLD-RENOWNED RESTAURANTS AS WELL AS LOCALLY LOVED FAVES, AND MEET CHEFS WHO HAVE GRACIOUSLY SHARED THEIR SIGNATURE RECIPES.

Raise your glass and toast a feast of culinary culture simmering with generations of recipes and age-old traditions. Master chefs across our epicurean countryside stir up Cajun, Creole, or country soul from dining dynasties to neighborhood notables. Tantalize your taste buds with a sample of favorites from each region of the state.





HOUMAS HOUSE PLANTATION

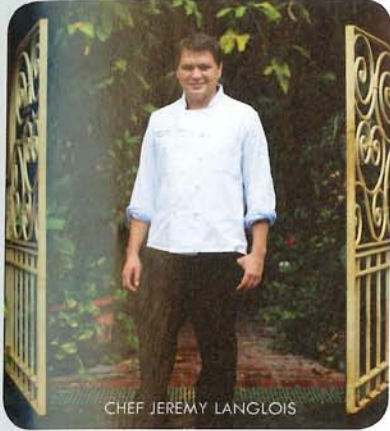
40136 Highway 942

Darrow, LA 70725

225-473-9380

www.houmashouse.com

PHOTOS BY C. ROSS.



CHEF JEREMY LANGLOIS

Follow a corridor of contrasts from river road plantations to the state capital's chic dining scene. Known as the Sugar Palace, Houmas House Plantation & Gardens in Darrow is a stunning example of how a studious owner can reinvent the home's stunning history, décor, and collections with an added dash of delectable dining.

Working in the kitchen for half of his life and still under the age of 30, Executive Chef Jeremy Langlois serves delectable culinary creations in a plantation once owned by sugar barons. Overlooking the Mississippi River, Chef Jeremy celebrates the unique tastes of Louisiana giving new tastes to mainstream meats, poultry, and seafood. A rack of lamb marinated in Community Coffee melts in your mouth while steam rises above the strawberry crepe made with Creole Cream Cheese ice cream and flaming champagne strawberry sauce ripe with Ponchatoula strawberries.

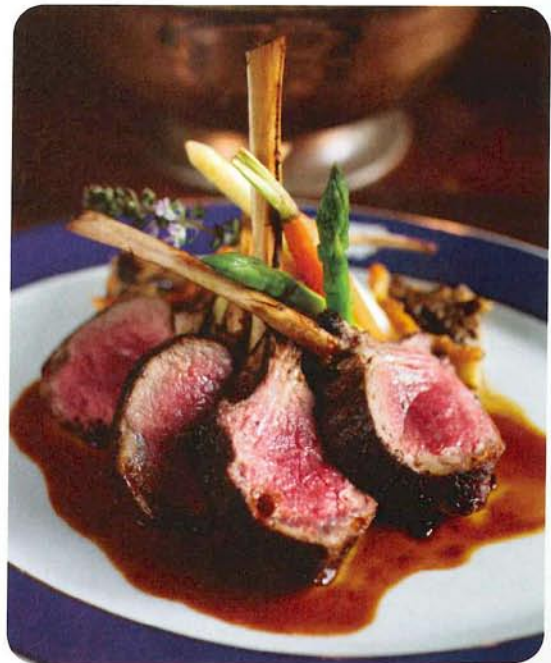
Sip on mint juleps in the Turtle Bar inside a historic garconnière or on top of the newly built Tea Garden for a bird's eye view of the sprawling estate. Enjoy formal dining at the Latil's Landing Restaurant inside the home's palatial rear wing built in 1770 by Alexander Latil. Savor Chef Jeremy's specialties surrounded by wood-burning fireplaces, original wood floors, and a collection of museum-quality art and artifacts.

COMMUNITY COFFEE MARINATED RACK OF LAMB

"Community Coffee is a Baton Rouge-based company, and is the largest family-owned coffee company in America. It is one of the true flavors of the South and surprisingly using it as a marinade for lamb enhances the subtle flavors of the meat."— Chef Jeremy Langlois

- 4 four bone racks of lamb, Frenched
- 5 cups Community Coffee, brewed and chilled
- 2 tablespoons olive oil
- salt and black pepper to taste

Place racks of lamb in a container and completely cover with Community Coffee. Marinate between 12 and 24 hours. Pre-heat oven to 400 degrees. Remove lamb from marinade and pat dry with a towel. Season lamb generously with salt and pepper. Heat a large sauté pan over high heat and add olive oil. Sauté lamb on each side until the meat is golden brown. Place on a roasting pan and cook in the oven until the internal temperature is 130 degrees or for about 12 minutes. Remove the lamb from the oven and allow the meat to rest on a cutting board for 10 minutes. Slice the meat between the bones into chops.



5 DISTINCT REGIONS, *One Unforgettable State!*

BY MARK A. NEWMAN

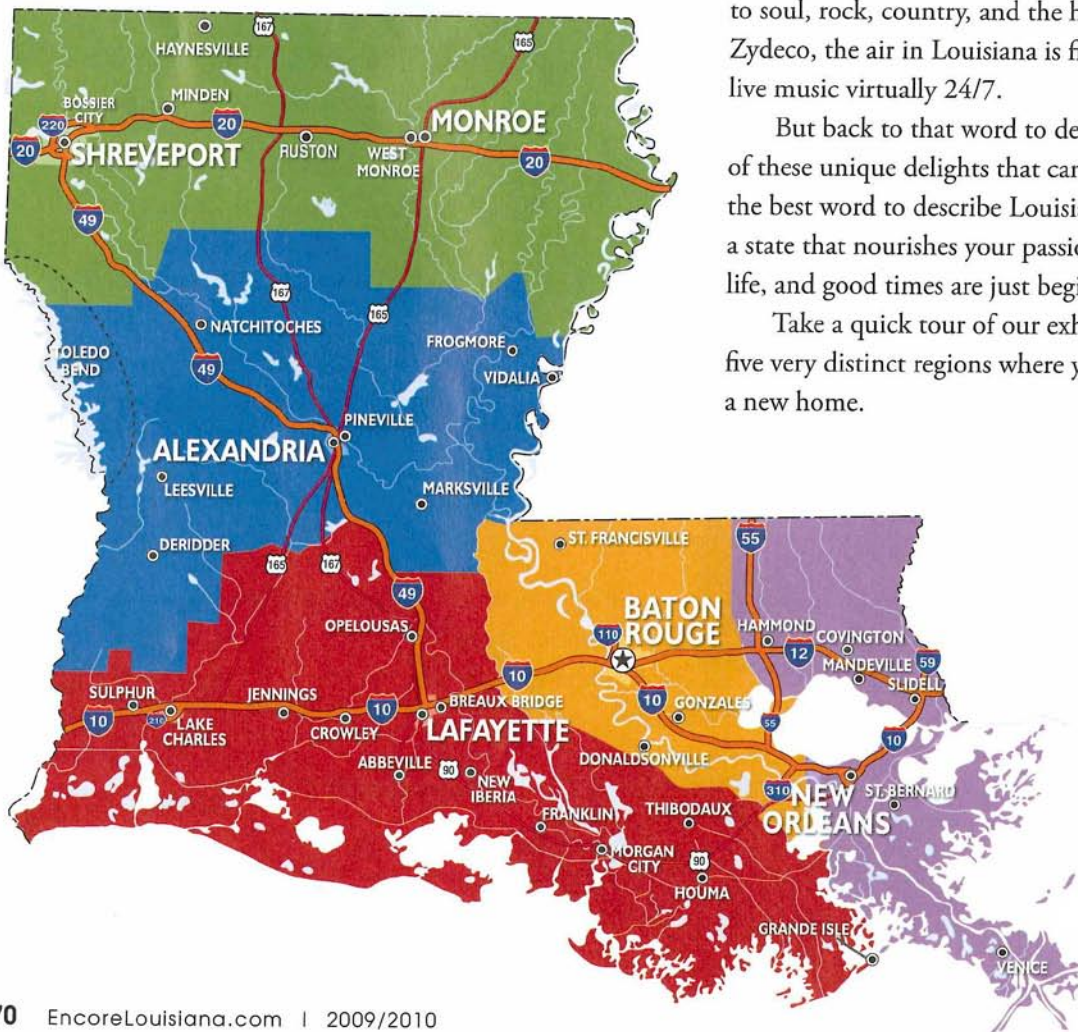
IF YOU HAD TO PICK ONE WORD TO DESCRIBE LOUISIANA, WHAT WOULD IT BE? THINK ABOUT THIS FOR A MINUTE BEFORE YOU DECIDE.

- SPORTSMAN'S PARADISE
- CROSSROADS
- CAJUN COUNTRY
- PLANTATION COUNTRY
- GREATER NEW ORLEANS

If you crave the great outdoors—all year long—Louisiana is the place to revel in Mama Nature's splendor. Do you like lip-smacking, finger-lickin' one-of-a-kind food? Then you will get your fill in Louisiana whether you're cooking up your own newly perfected gumbo recipe or savoring the succulence of crawfish etouffe and red beans and rice at an award-winning eatery. Who doesn't love music? From jazz and blues to soul, rock, country, and the hip-shaking rhythms of Zydeco, the air in Louisiana is filled with the strains of live music virtually 24/7.

But back to that word to describe Louisiana. With all of these unique delights that can only be found right here, the best word to describe Louisiana is: Passion. Louisiana is a state that nourishes your passions, as well as your zest for life, and good times are just beginning.

Take a quick tour of our exhilarating state, with five very distinct regions where your passions can find a new home.



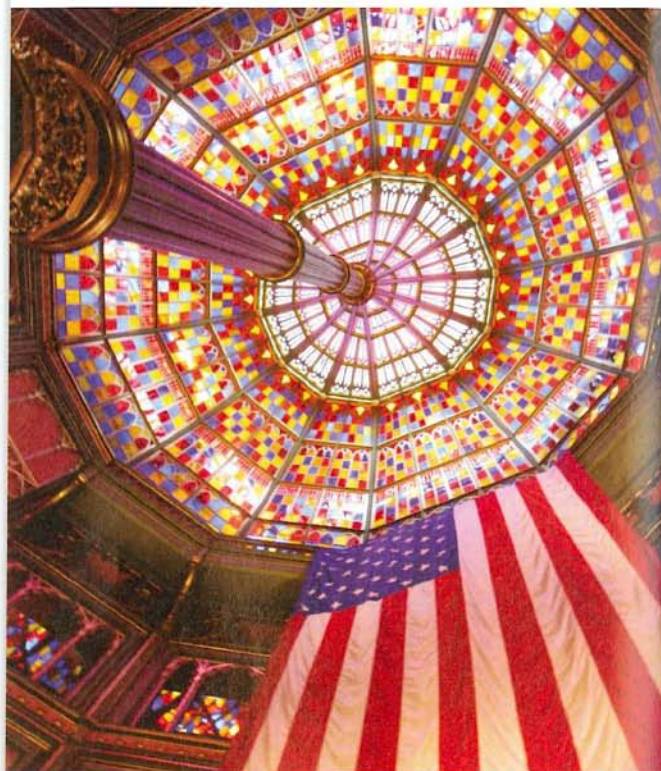
destinations

PLANTATION COUNTRY

Like wistful live oaks draped in Spanish moss, so blooms Louisiana's Plantation Country. Steeped in the history of the refined Old South but tempered with the groove of modern urban life, Plantation Country comes alive along the banks of the mighty Mississippi River. This is where the past is not only embraced, it is celebrated. From the stately antebellum homes straight out of a Tennessee Williams play to the hustle and bustle of political rising stars in Baton Rouge, Plantation Country will keep your heart racing and your soul inspired.

While historic Baton Rouge is the centerpiece of Plantation Country, other notable communities such as Burnside, White Castle, Gonzales, Denham Springs, Livonia, and so many more fan out in a region rich in romance and culture. Mention a mansion and you'll never be too far from any one of a number of historical plantations such as Houmas House in Darrow, Oak Alley and Laura plantations in Vacherie, Evergreen Plantation in Edgard, San Francisco Plantation in Garyville, Rosedown and Greenwood plantations in St. Francisville, and Destrehan Plantation in Destrehan.

Beyond the confines of the statehouse or even a stately house lies the unforgettable natural bounty that is so prevalent throughout the state. When you're here, don't miss the chance to commune with nature whether it's on one of the challenging yet beautiful golf courses or a swamp tour where you may find yourself face to face with flock of cranes or catching the attention of a curious turtle. Like your wildlife a little wilder? There are plenty of chances to take a gander at a gator...just remember, this is NOT a petting zoo!



Must-Sees in PLANTATION COUNTRY

- The Old State Capitol, BATON ROUGE
- Shaw Center/LSU Museum of Art, BATON ROUGE
- LSU Campus, BATON ROUGE
- State Capitol, BATON ROUGE
- Governor's Mansion, BATON ROUGE
- Southern University, BATON ROUGE
- Baton Rouge State Museum, BATON ROUGE
- Houmas House Plantation, DARROW
- Alligator Bayou, ASCENSION PARISH
- The Myrtles, ST FRANCISVILLE
- Nottoway Plantation, WHITE CASTLE

Old State Capitol. - PHOTO COURTESY OF THE
LOUISIANA OFFICE OF TOURISM.